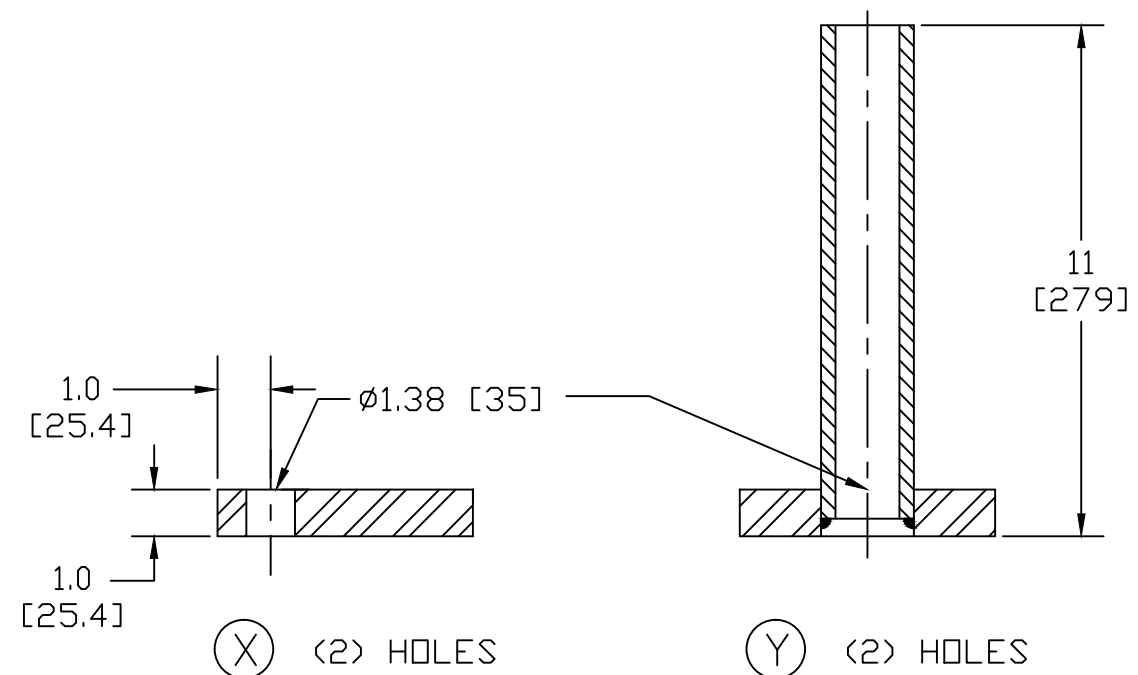
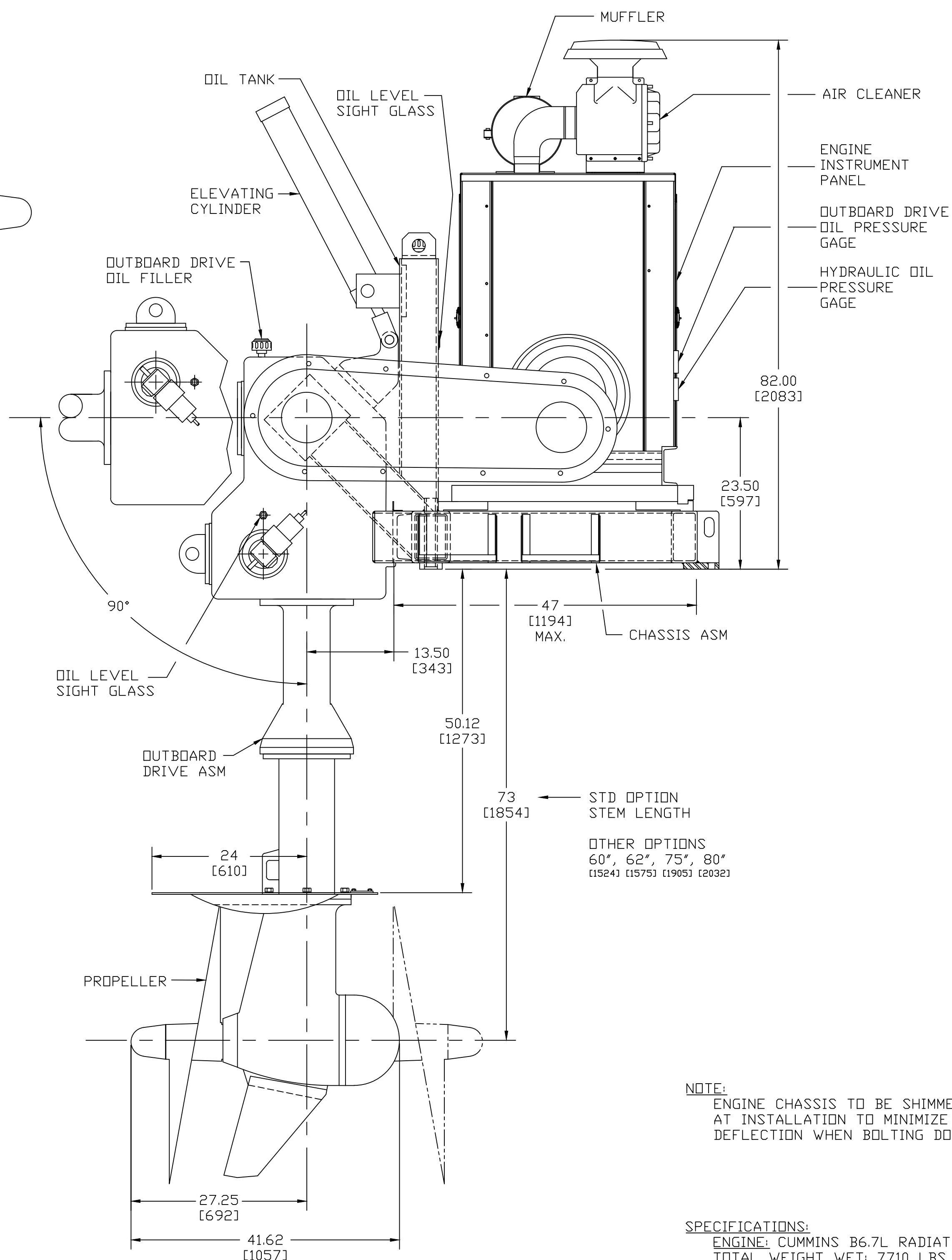


PLAN VIEW  
(ENGINE AND ENCLOSURE NOT SHOWN)

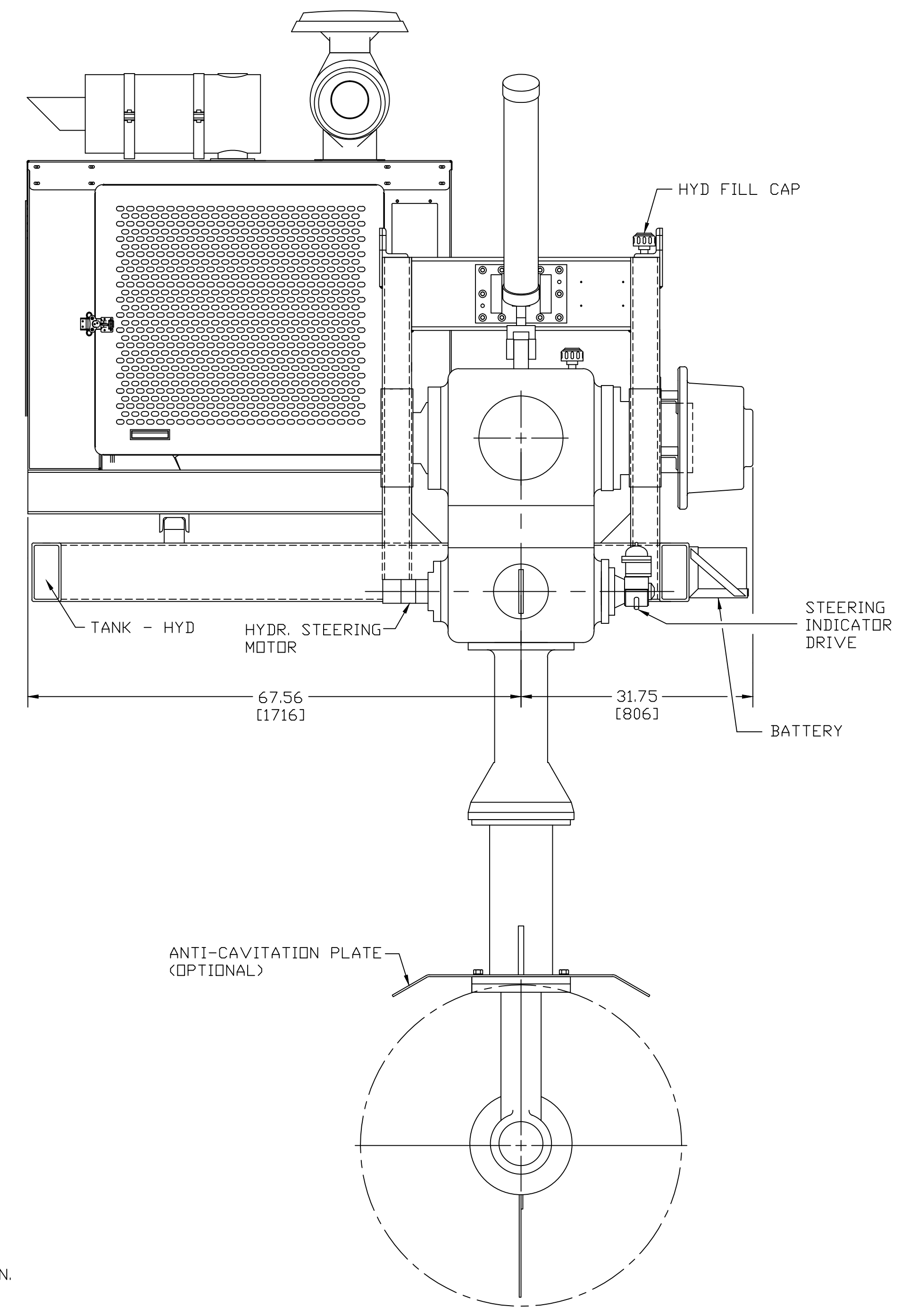


MOUNTING BOLT HOLES  
NO SCALE

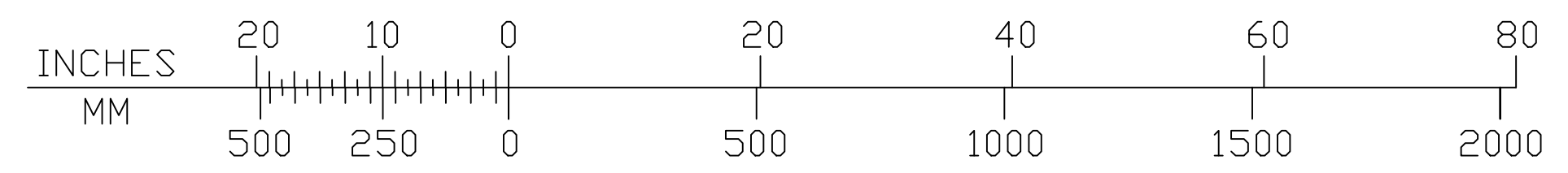


NOTE:  
ENGINE CHASSIS TO BE SHIMMED  
AT INSTALLATION TO MINIMIZE  
DEFLECTION WHEN BOLTING DOWN.

SPECIFICATIONS:  
ENGINE: CUMMINS B6.7L RADIATOR COOLED  
TOTAL WEIGHT WET: 7710 LBS [3497 KG]  
OPTIONAL FUEL TANK CAPACITY: 97 U.S. GALLONS [367 L]

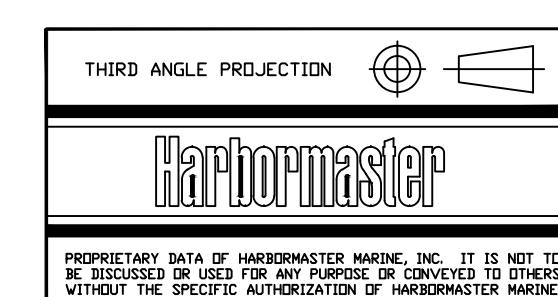


MODEL	P/N
SWR-3000	9923-D
SWR-3001	9923-1-D



ALSO REDUCED SIZE B

OPTIONAL EQUIPMENT MAY BE SHOWN



SYM		DATE		REVISION RECORD		DR	CH
<b>COMPUTER GRAPHICS DRAWING - CHANGE RESTRICTED</b>							
MATERIAL SPEC				DRAWN		APPROVED	
SCALE 1/12				K.J.B.		-	
FIRST USED 2007		MODEL CUMMINS B6.7L		REFERENCE 9923-D		DATE 2/25/13	
ALL DIMENSIONS IN INCHES (MM)				PART NAME		SHT 1 OF 1	
LIMITS +/- .010 INCH AND ANGLES TO 1/2 DEGREE UNLESS OTHERWISE STATED				INSTALLATION AND UNIT ASSEMBLY DWG - SWR 3001		NUMBER [ALSO CHART] 9923-1-D	